

AFS

Differential Pressure Switches (Metal)

The AFS Series Differential Pressure Switches are general purpose proving switches designed for both HVAC and Energy Management applications. These pressure switches can be used to sense positive, negative, or differential air pressures when used in conjunction with an A/SPT or A/VPT Series sampling tube. The plated housing contains a diaphragm, calibration spring and single snap-acting contact closure with either a manual or automatic reset switch depending on the model. The enclosure cover contains a 1/2" conduit knockout and guards against accidental contact with the live switch terminal screws as well as the set point adjusting screw.

Applications: Monitoring Filter Blockage, Proof of Flow, Prove Excessive or Insufficient Flow, Alarms and Control

The AFS Series is covered by ACI's Two (2) Year Limited Warranty. The warranty can be found in the front of ACI's Sensors & Transmitters catalog, as well as on ACI's website, www.workaci.com.

PRODUCT SPECIFICATIONS

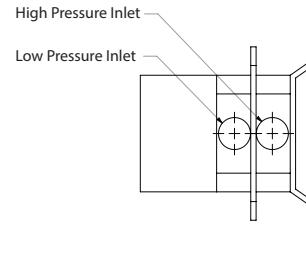
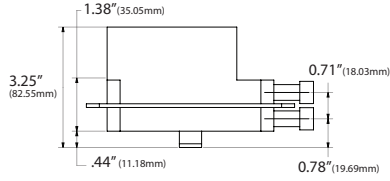
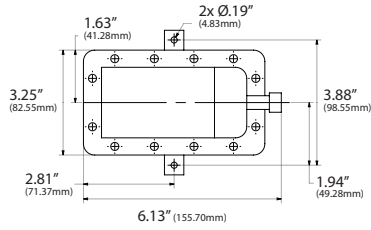
Input Pressure Range:	AFS-222: 0.05 +/- 0.02" to 12" wc AFS-262: 0.05 +/- 0.02" to 2.0" wc AFS-460: 0.40 +/- 0.06" to 12.0" wc
Set Point Range:	AFS-222: 0.05 +/- 0.02" to 12.0" wc AFS-262: 0.07" to 2.0" wc AFS-460: 0.40 +/- 0.06" to 12" wc
Field Adjustable "Operate" Range:	AFS-222: 0.07 to 12.0" wc AFS-262: 0.07" to 2" wc AFS-460: 0.46" to 12" wc
Field Adjustable "Release" Range:	AFS-222: 0.04 to 11.2" wc AFS-262: 0.04" to 1.9" wc
Approximate Switching Differential:	Progressive, increasing from 0.02 +/- 0.01" wc @ minimum set point to 0.8" wc @ maximum set point
Contact (Load) Rating:	AFS-222/AFS262: 300 VA pilot duty @ 115 to 277 VAC, 60 Hz; 15A non-inductive to 277 VAC, 60 Hz AFS-460: 15A @ 125, 250, or 277 VAC / 1/2A @ 125 VDC, 1/4A @ 250 VDC / 1/4 hp @ 125 VAC, 1/2 hp @ 250 VDC AFS-460-137: 8A @ 250 VAC
Contact Arrangement:	AFS-222/AFS-262: SPDT w/ Automatic Reset AFS-460: SPST-NC w/ Manual Reset AFS-460-137: DPDP w/ Manual Reset
Measured Media:	AFS-222/AFS-262: Air or combustion by-products that will not degrade silicone AFS-460: Air
Maximum Pressure:	0.5 PSI (0.03 Bar)
Life Expectancy:	AFS-222/AFS-262: 100,000 cycles minimum @ 1/2 psi (0.03 Bar) max pressure / cycle & max load AFS-460: 6,000 cycles minimum @ 1/2 psi (0.03 Bar) max pressure / cycle & max load
Operating Temperature Range:	-40 to 180°F (-40 to 82°C)
Operating Humidity Range:	10 to 95% RH, non-condensing
Mounting Direction:	Any vertical plane
Enclosure Material:	Galvanized Steel
Sample Line Connections:	Accepts 1/4" OD rigid or semi-rigid metallic tubing using integral compression fitting, ferrule and nut / "-112 Option": Includes two barbed fittings that accepts 1/4" flexible plastic tubing
Electrical Connections:	Screw type terminal with cup washers
Conduit Opening:	Accepts 1/2" Conduit (7/8" (22.3 mm) opening)
Agency Approvals:	UL, CUL, FM, CSA, CE, ISO 9001: 2008
Dimensions (H x W x D):	6.25" x 4.46" x 3.18" (158.8 mm x 113.3 mm x 80.8 mm)
Weight:	1.2 lbs (0.544 kg)



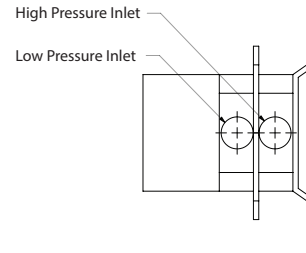
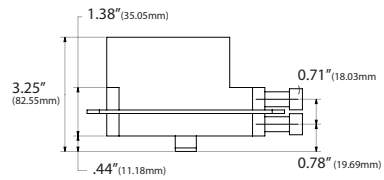
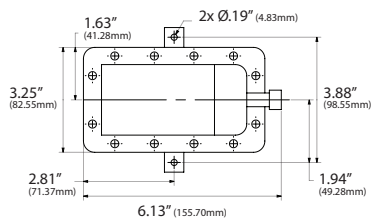


DIMENSIONAL DRAWING

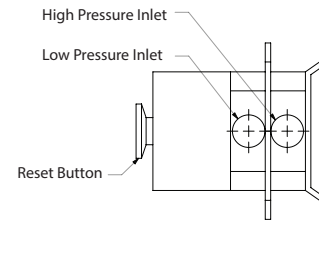
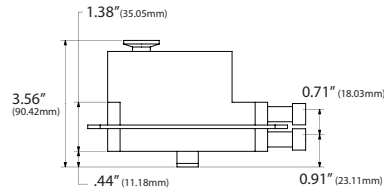
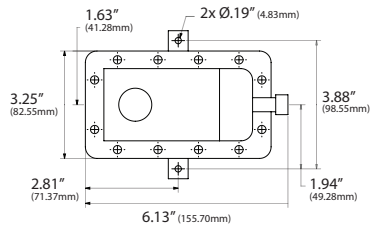
AFS [222]



AFS [262]



AFS [460]



Front View

Right View

Top View

STANDARD ORDERING

Model # Example: AFS-222 -OR- 101788

Model #	Item #	Pressure Range	Contact Style	Reset Style	Compression Fitting	Barbed Fitting
AFS-222	101788	0.05 to 12.0" wc	SPDT	Auto	•	
AFS-222-112	108816	0.05 to 12.0" wc	SPDT	Auto		•
AFS-262	101789	0.05 to 2.0" wc	SPDT	Auto	•	
AFS-262-112	118041	0.05 to 2.0" wc	SPDT	Auto		•
AFS-460	101791	0.40 to 12.0" wc	SPST-N/C	Manual	•	
AFS-460-112	129657	0.40 to 12.0" wc	SPST-N/C	Manual		•
AFS-460-137	105782	0.60 to 12.0" wc	DPDT	Manual	•	