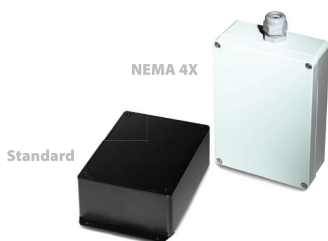




RR2552B

Signal Repeater / Extender



The RR2552B repeater uses the reliable 900 MHz spread spectrum technology to work with any ACI wireless system to boost or extend the range of wireless sensors and is easily installed. The RR2552B has an 8 position dipswitch that is user selectable to set the address of the RR2552B to match the Network ID of the receiver/transceiver in each system so there is no programming required. The RR2552B must be powered with 24 VAC. Two Duracell DL123 3V lithium batteries are included for temporary power to position the repeater before final installation and wiring. Without the use of the RR2552B wireless repeater, all systems will be a point to point system, meaning that the sensor and transceiver will communicate directly with each other. Sensor distance and reliability can be

increased with the addition of a RR2552B(s) repeater. The RR2552B will work with all ACI wireless sensors, receivers and transceivers.

Note: For best results, no more than three (3) repeaters should be installed per wireless system, and no more than two (2) repeaters in series with the transceiver/receiver.

Applications: Museums, Churches, Historical Buildings & New Construction

The RR2552B is covered by ACI's Two (2) Year Limited Warranty. The warranty can be found in the front of ACI's Sensors & Transmitters catalog, as well as on ACI's web site, workaci.com.

PRODUCT SPECIFICATIONS

Supply Voltage¹:	24 VAC, 60 Hz (full wave rectified)
Supply Current:	300 mA
Connections:	Screw Terminal Blocks
Wire Size:	16 AWG (1.31 mm ²) to 26 AWG (0.129 mm ²)
Terminal Block Torque Rating:	0.37 ft-lb (0.5 Nm) Nominal
Operating Temperature Range:	14 to 140°F (-10 to 60°C)
Operating Humidity Range:	30 to 50% RH, Noncondensing
Storage Temperature Range:	-4 to 176°F (-20 to 80°C), 70% RH
Data Protocol:	IEEE 802.15.4-2003/2006
RF Characteristics:	900 MHz, Operating Frequency 10 channels between 902 – 928 MHz Transmitter Power: 11 dBm Receiver Sensitivity: -11 dBm
Transmission Distance:	200 – 300 ft horizontally depending on building type and constructions, and typically one floor above and below the transceiver vertically
Network Addressable:	1 to 64, Dip switch selectable All switches set to OFF = Address 1 (default) Address of repeater must match the Network ID of the receiver/transceiver
Enclosure Material Flammability Rating:	Standard: ABS Plastic UL94-5VA NEMA 4X: Polycarbonate Plastic UL94 HB
Product Dimensions:	Standard: (L) 7.28" (184.91 mm) x (W) 4.72" (119.89 mm) x (H) 2.36" (59.94 mm) NEMA 4X: (L) 6.73" (170.94 mm) x (W) 4.76" (120.90 mm) x (H) 2.16" (54.86 mm)
Product Weight:	Standard: 1.65 lbs (0.75 kg) NEMA 4X: 1.675 lbs (0.76 kg)

Note¹: The RR2552B must be powered with 24 VAC for long term use





DIMENSIONAL DRAWING

<p>Standard</p>		
<p>NEMA 4X</p>		
<p>Front View</p>	<p>Right View</p>	<p>Top View</p>

STANDARD ORDERING

Model #	Item #	Description
RR2552B	130662	Two Way Repeater, Standard Enclosure
RR2552BE	130694	Two Way Repeater, NEMA 4X Enclosure