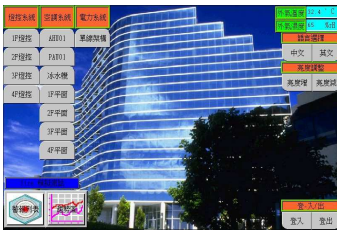


## APOGEE / DESIGO™ PX-HMI HMI-Touch Panel

## LUI-Touch



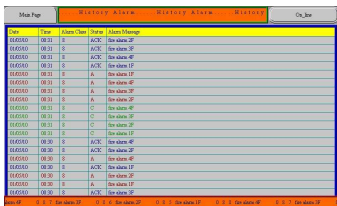
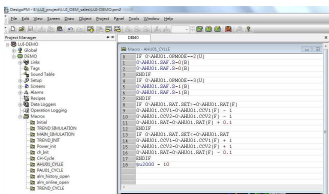
### Description

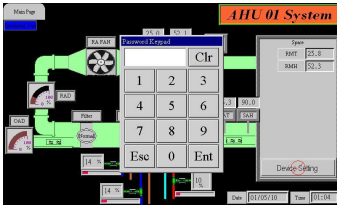
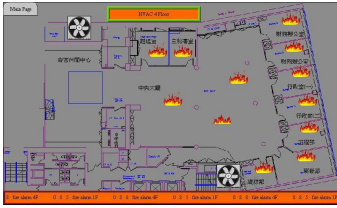
LUI-Touch touch panel is an HMI with high performance and programmable functions to answer the needs for most of the BMS BACnet IP and MS/TP automation stations and systems.

With colorful high resolution screen, there is no compromise with its' response speed. The state-of-the-art industrial standard design makes LUI-Touch to easily handle harsh environments under long and steady operation time.

### Features

- Supports SIEMENS APOGEE and DESIGO BACnet IP and MS/TP platform, also could be connection with BACnet LON via DESIGO PXG80-N BACnet Router.
- One million touch operated guaranteed.
- Multilingual supported, such as English, French, Germany, Italian, Espaniol, Traditional/Simplified Chinese, Japanese, Korean....etc
- Macro Programme:
  - Easy macro syntax genie supports you to design your control logic between HMI and communication device.
  - More function types of macro definition for startup, main, event, time, point on/off and page on/off to selection
- Alarm:
  - Provide alarm definition in LUI-Touch that include history alarms, on-line alarms and PopUp alarm message.
  - Totally 8 level alarm color defined.
  - Totally 16 zone alarm define and spearted for digital and analog alarm, analog alarm can be set of Hi/Hi-Hi and Low/Low-Low level indication.
  - Standard alarm list page for on-line and history.
- Security:
  - Total of 8 level password define to operating priority.
  - The viewable, controllable of priority setup for each objects





DATE	TIME	EVENT Message
141210	02:04	Graphic Display operation
141210	02:04	AS11 Manual control (CS)
141210	02:04	AS12 Manual control (CF)
141210	02:04	AS13 Manual control (CF)
141210	02:04	Graphic Display operation
141210	02:03	Graphic Display operation
141210	02:03	Alarm indication operation
141210	02:03	Graphic Display operation
141210	02:03	Fan alarm indication test (CF)
141210	02:03	Fan alarm ACK on touch page
141210	02:03	Graphic Display operation
141210	02:03	AS11 Manual control (CS)
141210	02:02	AS11 Manual control (CS)
141210	02:02	AS11 Manual control (CS)
141210	02:02	AS11 Manual control (CS)
141210	02:02	AS11 Manual control (CS)
141210	02:02	Graphic Display operation

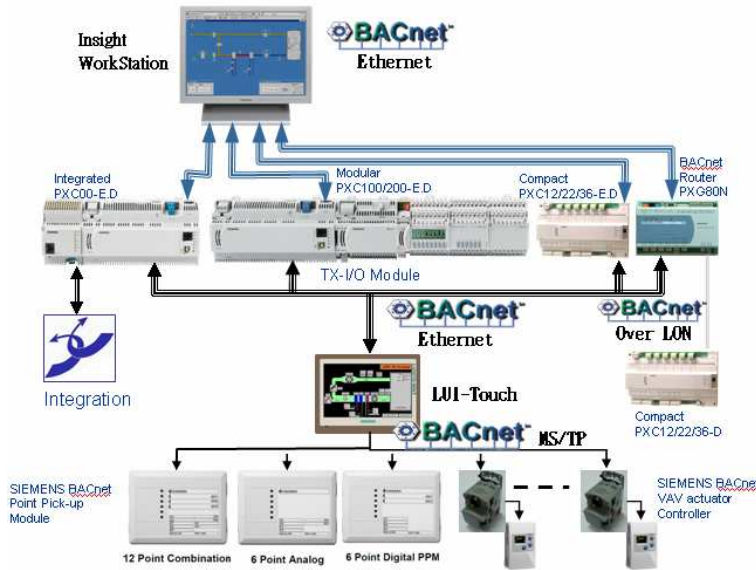
Obj	Name	Time	Day	Start Time	End Time	Repeat
1	TR0101_01010101_010101	01:00:00	010101	01:00:00	01:00:00	010101
2	TR0101_01010101_010101	01:00:00	010101	01:00:00	01:00:00	010101
3	TR0101_01010101_010101	01:00:00	010101	01:00:00	01:00:00	010101
4	TR0101_01010101_010101	01:00:00	010101	01:00:00	01:00:00	010101
5	TR0101_01010101_010101	01:00:00	010101	01:00:00	01:00:00	010101

definition, such as button, info-block, graphic page, trend chart page...etc.

- Auto logoff, login setup and screensaver enable.

- 100% quality test and industrial standard coating cases let LUI-Touch look reliable and nice.
- Adopts 32 bits high function; high reliability and fan- less ARM CPU.
- Equipped with genuine 65535 true colors or 256 colors, high brightness TFT modules.
- Provides RS232/422/485 communication ports available in standard models.
- The standard pre-set 4 to 128MB backup flash memory, which can expand up to 2GB Micro SD or USB Flash disk, allows user to store alarms, events and historical data.
- Supports multi - languages, Windows build- in Fonts, BMP and JPG graphics and GIF animations.
- Provides transparent communication for designers to save their program adjustment time.
- The extension bus extends various customized devices, such as motion control, temperature control, communication module and I/O module...etc.
- High speed Ethernet and USB host port supports runtime database upload and download remote communication.
- Support MODBUS TCP/RTU/ASCII..communcion protocol.
- Schedule:
  - Include standardize schedule module.
  - Total of 48 Schedule objects including normal and special day.
  - Support customer defined.
  - Support group Ucc/Unocc via Macro programme.
- FTP Server supports, could be down/up load from remote PC station.
- Standard message indication. Show all of operating recode on panel.

# Applications:



Description for model 4.3", 7.0", 8.0", 10.0" and 12.1" type:

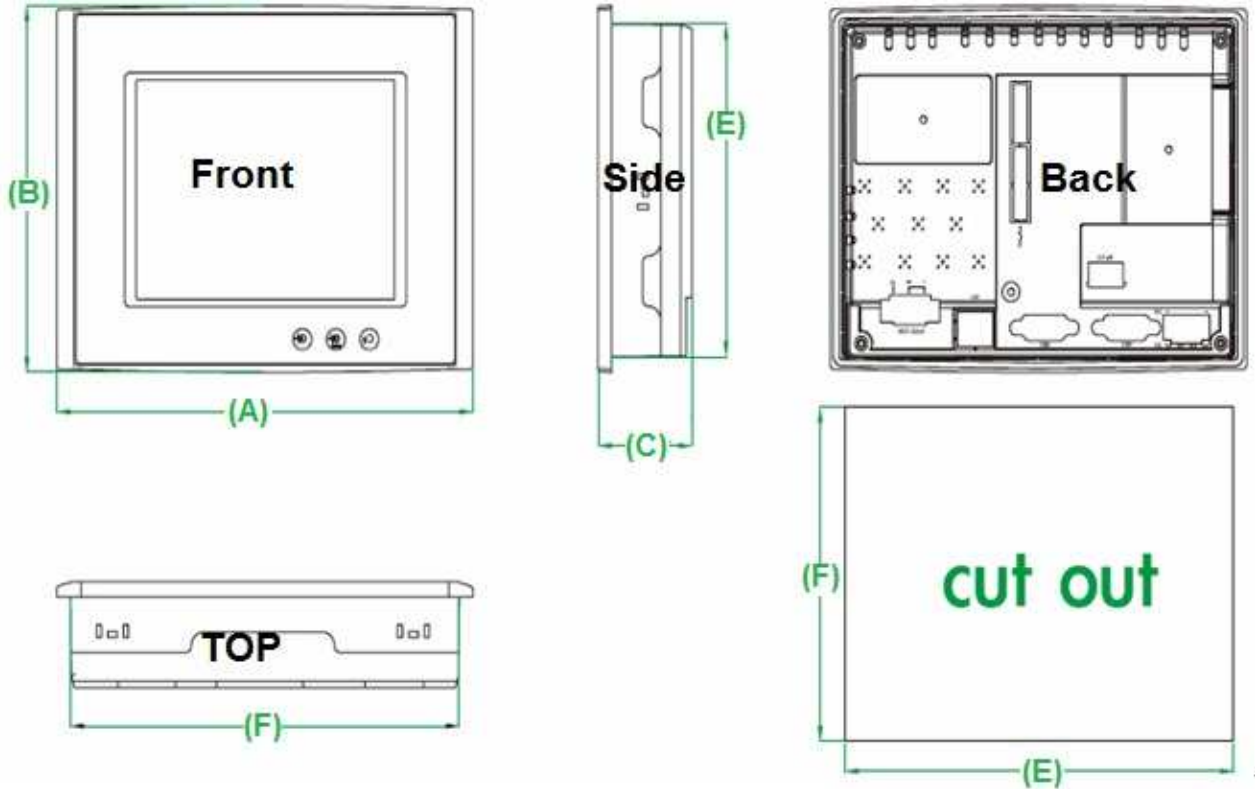
- Via Ethernet port for connecting one to four BACnet /IP Automation Controller.
- Via serial port for connecting one to four BACnet MS/TP DDC device.
- Only support BACnet standard object AI, AO, AV, BI, BO, BV, MI, MO, MV object type.
- Support Modbus RTU and TCP protocol connection.
- Customize graphic design..



Description for model 5.7" and 3.5" type:

- Via Ethernet port for connecting one BACnet /IP Automation Controller.
- Via serial port for connecting one BACnet MS/TP DDC device.
- Only support BACnet standard object AI, AO, AV, BI, BO, BV, MI, MO, MV object type.
- Support Modbus RTU and TCP protocol connection.
- Customize graphic design.. °

## Dimensions:



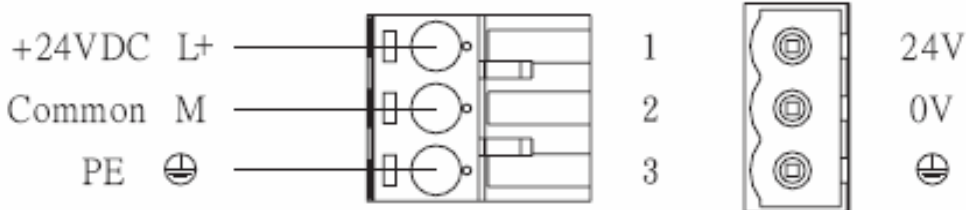
Model Number:	Outlet Dimensions:	Cutout Dimensions:
LUI035-TNT	(A)130 mm W / (B)106.2mm H / (C)37 mm T	(E)118.5 mm / (F)92.5 mm
LUI043-WNT	(A)130 mm W / (B)106.2 mm H / (C)37 mm T	(E)118.5 mm / (F)92.5 mm
LUI043-WNT1S	(A)130 mm W / (B)106.2 mm H / (C)37 mm T	(E)118.5 mm / (F)92.5 mm
LUI058-TNT	(A)188 mm W / (B)143 mm H / (C)45 mm T	(E)174.5 mm / (F)132.5 mm
LUI070-WNT	(A)188 mm W / (B)143 mm H / (C)40 mm T	(E)174.5 mm / (F)132.5 mm
LUI070-WNT1S	(A)188 mm W / (B)143 mm H / (C)40 mm T	(E)174.5 mm / (F)132.5 mm
LUI080-TNT	(A)232.5 mm W / (B)175.8 mm H / (C)49 mm T	(E)221.5 mm / (F)164 mm
LUI104-TNT	(A)297 mm W / (B)224 mm H / (C)52 mm T	(E)285.5 mm / (F)210.5 mm
LUI121-TNT	(A)315 mm W / (B)241 mm H / (C)54.5 mm T	(E)301.5 mm / (F)228.0 mm

# Connections / 腳位圖

## Power Supply / 電源供應

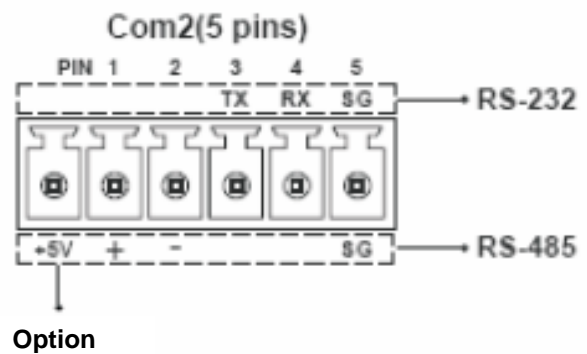


Powered by a Low Voltage / Limited Energy power source.  
以低電壓提供電力 / 限制能量電源。

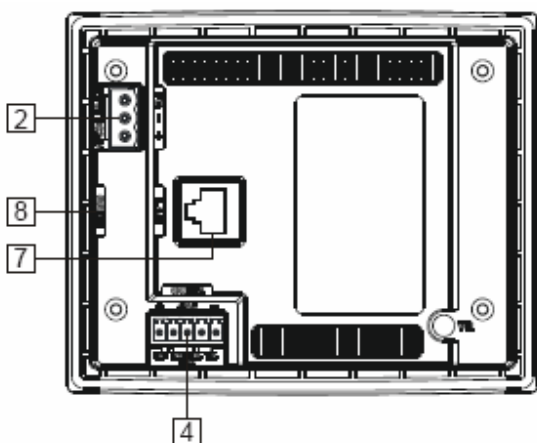


LUI043/070

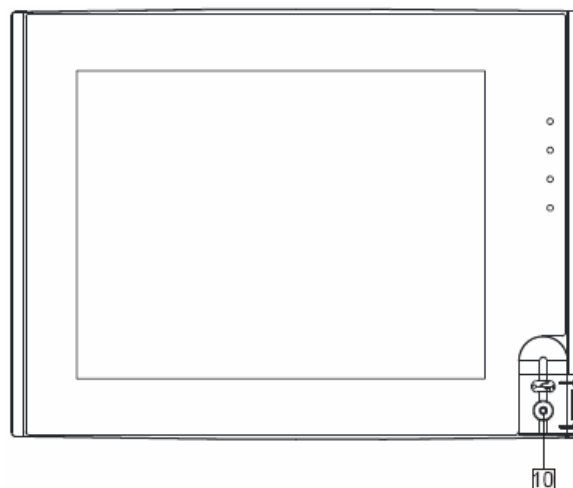
COM1 (DB-9-Female)	
Pin	Description:
1	RD-422 TXD+ / RS-485 +
2	RS-232 RXD
3	RS-232 TXD
4	RS-422 RXD+
5	GEN
6	RS-422 TXD- / RS-485-
7	RS-232 TXD for COM3
8	RS-232 RXD for COM3
9	RS-422 RXD-



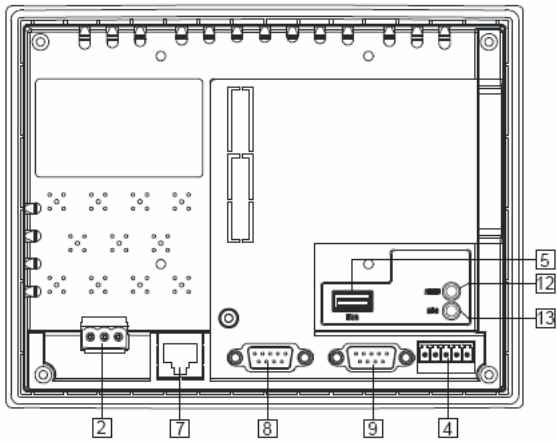
LUI035 Back View



LUI104 Front View



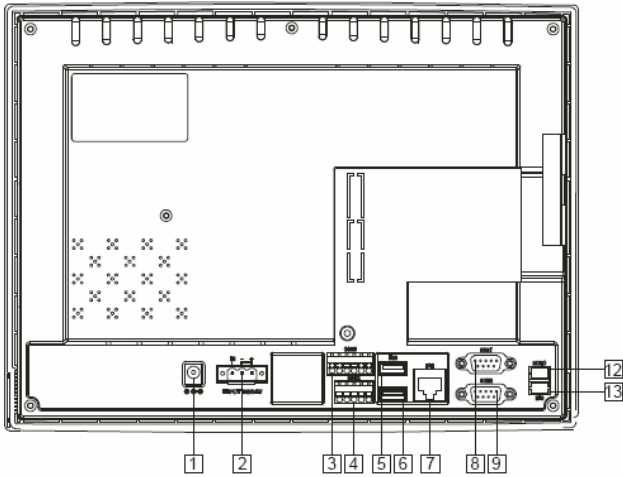
## LUI058 Back View



## Parts Introduction

- 1 Power connector (jack)
- 2 Power connector (terminal)
- 3 Com3 6pin (terminal)
- 4 Com2 5pin (terminal)
- 5 USB connector
- 6 USB connector
- 7 Ethernet port (for NT/AT models)
- 8 Com1 9 pin female
- 9 Com2 9 pin male
- 10 USB front connector
- 11 Dip switch
- 12 Audio
- 13 Mic
- 14 Com2 4pin(terminal)

## LUI080/121 Back View

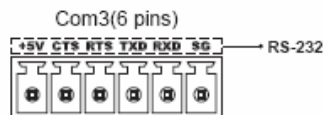
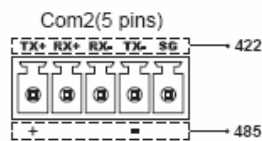
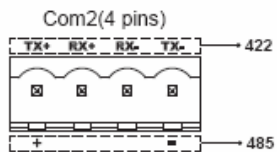


Com 1 (DB-9 Female)

Pin	Description
1	RD-422 TXD+ / RS-485+
2	RS-232 RXD
3	RS-232 TXD
4	RS-422 RXD+
5	GND
6	RS-422 TXD- / RS-485-
7	RS-232 RTS
8	RS-232 CTS
9	RS-422 RXD-

Com 2 (DB-9 Male)

Pin	Description
1	
2	RS-232 RXD
3	RS-232 TXD
4	
5	GND
6	
7	RS-232 RTS
8	RS-232 CTS
9	Optional 5V output



# Technical Specification:

A: LUI035-TNT , B: LUI058-TNT , C: LUI043-WNT , D: LUI043-WNT1S E: LUI070-WNT , F: LUI070-WNT1S , G: LUI080-TNT , H: LUI104-TNT I: LUI121-TNT			A	B	C	D	E	F	G	H	I
Display	Type	TFT LCD Module	●	●	●	●	●	●	●	●	●
	COLORs	65,536 colors			●	●	●	●	●	●	●
		256 colors	●	●							
	BACKLIGHT TUBE	LED Backlight 200,000 Hrs	●		●	●	●	●			
		CCFL Backlight		●					●	●	●
	Brightness (cd/m <sup>2</sup> )		350	350	350	500	300	300	450	450	450
	RESOLUTION(Pixels)		320*240	320*240	480*272	480*272	800*480	800*480	800*600	800*600	800*600
SIZE(Inch)		3.5	5.7	4.3	4.3	7.0	7.0	8.0	10.4	12.1	
Touchscreen	Hardness/4H, 4-wire analog resistance		●	●	●	●	●	●	●		
	Hardness/4H, 8-wire analog resistance									●	
CPU	Nuvoton	NUC950ADN 32bits			●	●	●	●			
	Cirrus	EP9037 32bits							●	●	
	NXP	LH75411-NOQ 32bits	●	●						●	
O.S		NEO RTOS	●	●	●	●	●	●	●	●	
Application memory.		8M + 128MB NAND Flash			●	●	●	●			
		4MB	●	●							
		16MB							●	●	
Battery backup memory		128KB(Standard)	●	●	●	●	●	●	●	●	
Working memory		1MB SDRAM		●							
		2MB SDRAM	●								
		64MB SDRAM							●	●	
		128MB SDRAM			●	●	●	●			
Interface	Series	COM1:RS232	●	●	●	●	●	●	●	●	
		COM2:RS232/422/485	●	●	●	●	●	●	●	●	
		COM3:RS232							●	●	
	Ethernet	10/100Mbps	●	●	●		●		●	●	
	USB	2 port USB Host Ver2.0 FULL Speed			●	●	●	●	●	●	
	Expansion	Micro SD card			●	●	●	●	●		
Print Port	USB device port			●	●	●	●				
	COM Port							●	●		
Power	Input power	DC20V ~ DC28V	●	●	●	●	●	●	●	●	
	Consumption (W)		8	10	15	15	20	20	20	20	
Operation Temp		0~50 °C (32~ 120°F)	●	●	●	●	●	●	●	●	
Relative Humidity		10% ~ 90%RH	●	●	●	●	●	●	●	●	
Vibration		10 to 55Hz (X, Y, Z axial, 1G Hz 30 Minutes vibration test)	●	●	●	●	●	●	●	●	
EMI		FCC Part 15 Class A	●	●	●	●	●	●	●	●	
CE		EN55022 , EN61000-4-2 , EN61000-4-3 , EN61000-4-8	●	●	●	●	●	●	●	●	
Protection class		NEMA4 / IP65(front panel) standard	●	●	●	●	●	●	●	●	
Cooling		Free cooling	●	●	●	●	●	●	●	●	
Approvals		CE/FCC	●	●	●	●	●	●	●	●	
Schedule object.		Support schedule control			●	●	●	●	●	●	
Net Weight (kg)		0.54 kg	0.45	0.85	0.3	0.3	0.54	0.54	0.9	1.4	2.2

## Order Information:

P/N	Description	MOQ
LUI035-TNT	3.5 inches 256 color touch screen with Ethernet Port.	10
LUI043-WNT	4.3 inches full color touch screen with Ethernet Port.	5
LUI043-WNT1S	4.3 inches full color touch screen with Serial Port only.	5
LUI058-TNT	5.7 inches 256 color touch screen with Ethernet Port.	5
LUI070-WNT	7 inches full color touch screen with Ethernet Port.	3
LUI070-WNT1S	7 inches full color touch screen with Serial Port only.	3
LUI080-TNT	8.0 inches full color touch screen with Ethernet Port.	1
LUI104-TNT	10.4 inches full color touch screen with Ethernet Port.	1
LUI121-TNT	12.1 inches full color touch screen with Ethernet Port.	1