

APOGEE / DESIGO™ PX-HMI

HMI-Touch 5.7" Panel

LUI-Touch



Description

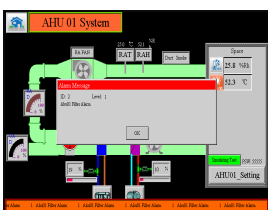
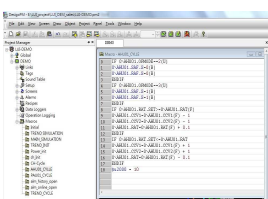
LUI-Touch touch panel is an HMI with high performance and programmable functions to answer the needs for most of the BMS BACnet MS/TP automation stations and systems.

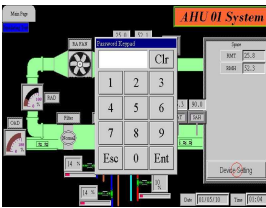
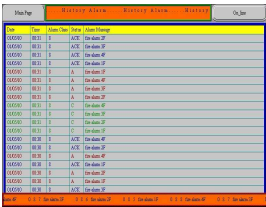
With colorful high resolution screen, there is no compromise with its' response speed. The state-of-the-art industrial standard design makes LUI-Touch to easily handle harsh environments under long and steady operation time.



Features

- Supports SIEMENS APGOEE and DESGIO BACnet MS/TP platform.
- One million touch operated guaranteed.
- Multilingual supported, such as English, French, Germany, Italian, Espaniol, Traditional/Simplified Chinese, Japanese, Korean....etc
- Macro Programme:
 - Easy macro syntax genie supports you to design your control logic between HMI and communication device.
 - More function types of macro definition for startup, main, event, time, point on/off and page on/off to selection
- Alarm:
 - Provide alarm definition in LUI-Touch that include history alarms, on-line alarms and PopUp alarm massage.
 - Totally 8 level alarm colour defined.
 - Totally 16 zone alarm define and spearted for digital and analog alarm, analog alarm can be set of Hi/Hi-Hi and Low/Low-Low level indication.
 - Standard alarm list page for on-line and history.





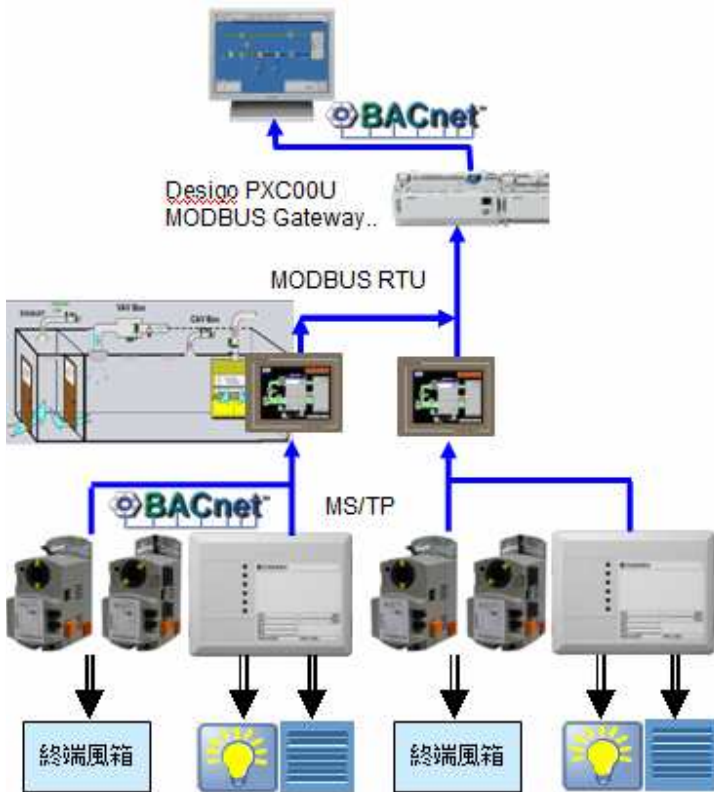
- Security:
 - Total of 8 level password define to operating priority.
 - The viewable, controllable of priority setup for each objects definition, such as button, info-block, graphic page, trend chart page...etc.
 - Auto logoff, login setup and screensaver enable.

- 100% quality test and industrial standard coating cases let LUI-Touch look reliable and nice.
- Adopts 32 bits high function; high reliability and fan- less ARM CPU.
- Equipped with genuine 65,535 true colors, high brightness TFT modules.
- Provides RS232/422/485 communication ports available in standard models.
- The standard pre-set 32MB backup flash memory.
- Supports multi - languages, Windows build- in Fonts, BMP and JPG graphics and GIF animations.
- Provides transparent communication for designers to save their program adjustment time.
- The extension bus extends various customized devices, such as motion control, temperature control, communication module and I/O module...etc.
- USB host port supports runtime database upload and download remote communication.
- Support MODBUS RTU/ASCII..communcion protocol.

- Schedule:
 - Include standardize schedule module.
 - Total of 48 Schedule objects including normal and specical day.
 - Support customer difined.
 - Support group Ucc/Unocc via Macro programme.

- Standard message indication. Show all of operatng recode on panel.

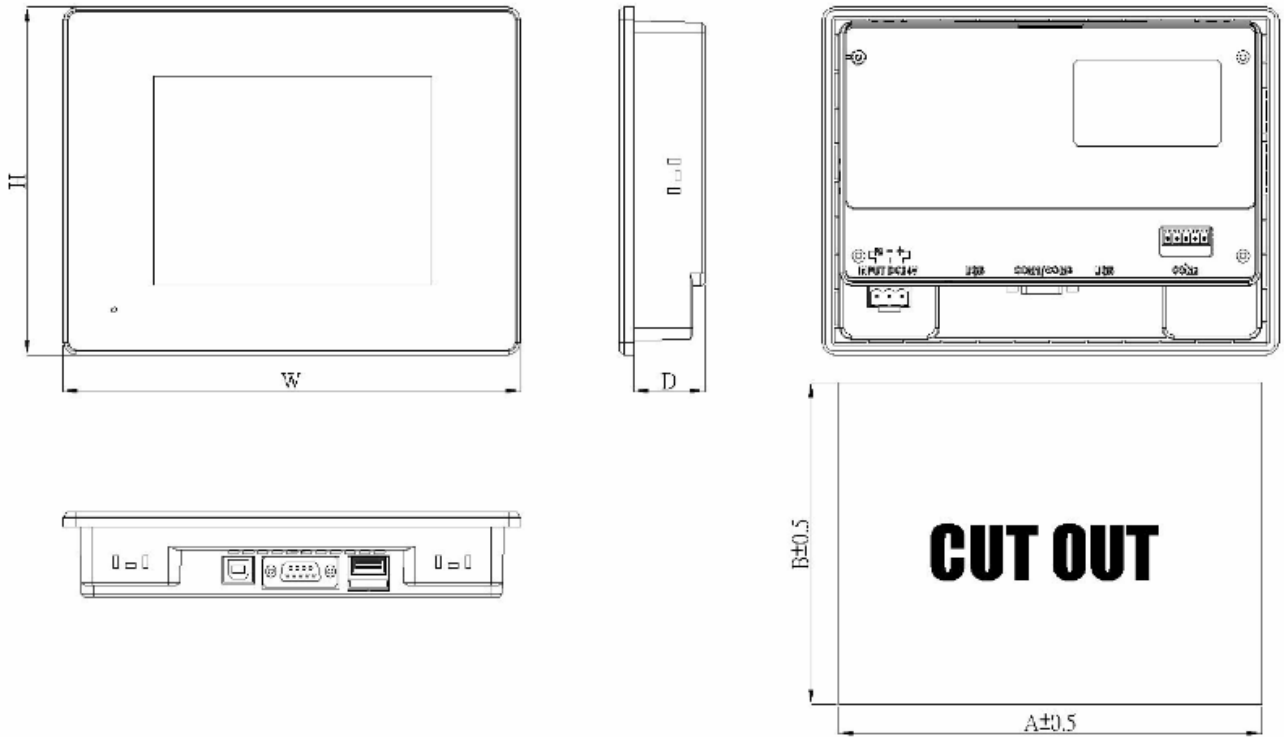
Applications:



Description for model 5.7" type:

- Via serial port for connecting one to four BACnet MS/TP DDC device.
- Only support BACnet standard object AI, AO, AV, BI, BO, BV, MI, MO, MV object type.
- Support MODBUS RTU/ASCII protocol connection.
- Integrate to BMS system via DDC and MODBUS gateway or workstation directly such as DESIGO Insight or 3'rd SCADA HMI.
- Customize graphic design..

Dimensions:

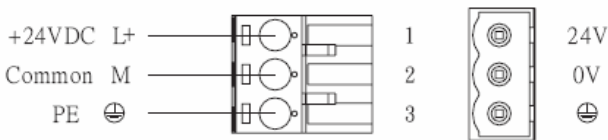


Model Number:	Outlet Dimensions:	Cutout Dimensions:
LUI057-ANT1S	(W)188 mm / (H)143.3mm / (D)40 mm	(A)174.5 mm / (B)132.5 mm

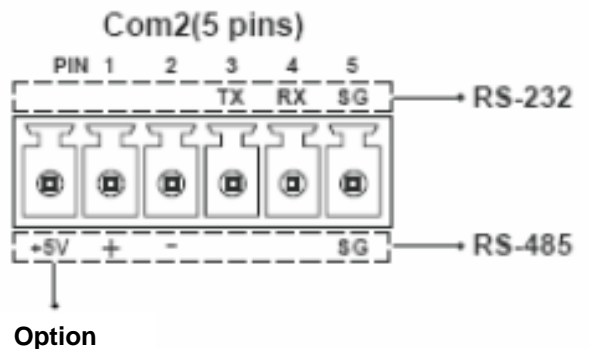
Connections / 腳位圖

Power Supply / 電源供應

Powered by a Low Voltage / Limited Energy power source.
以低電壓提供電力 / 限制能量電源。



COM1 (DB-9-Female)	
Pin	Description:
1	RD-422 TXD+ / RS-485 +
2	RS-232 RXD
3	RS-232 TXD
4	RS-422 RXD+
5	GEN
6	RS-422 TXD- / RS-485-
7	RS-232 TXD for COM3
8	RS-232 RXD for COM3
9	RS-422 RXD-



Technical Specification:

Display	Type	TFT LCD Module
	COLORs	65,536 colors
	BACKLIGHT TUBE	LED Backlight 20,000 Hrs (Note:1)
	Brightness (cd/m ²)	300
	RESOLUTION(Pixels)	320 * 234
	SIZE(Inch)	5.7
	Touchscreen	Hardness/4H, 4-wire analog resistance
CPU	Nuvoton	ARM926EJ-S 32bits, 200MHz
O.S		HMI RTOS; LUI-Design
Application memory		8MB NAND Flash
Battery backup memory		128KB(Standard)
Working memory		32MB SDRAM
Real Time clock		Yes
Interface	Series	COM1: RS232/422/485(DB9 Female) COM2: RS232/ RS485 (T.B.) COM3: RS232 (Com1: Pin5;7;8)
	Ethernet	None.
	USB	USB Host x 1 , USB Client x 1
	Expansion	None.
	Print Port	None.
Power	Input power	24V DC+-10%
	Consumption (W)	10
Operation Temp		0°~50 °C (32°~ 120°F)
Relative Humidity		10% ~ 90%RH
Vibration	10 to 55Hz (X, Y, Z axial, 1G Hz 30 Minutes vibration test)	
EMI		FCC Part 15 Class A
CE	EN55022 · EN61000-4-2 · EN61000-4-3 · EN61000-4-8	
Protection class		NEMA4/IP65(front panel) standard
Cooling		Free cooling
Approvals		CE/FCC
Schedule object.		Support schedule control
Net Weight (kg)		0.8
Note 1: The lamp lifetime is the typical value for continuous operation at 25 °C.		

Order Information:

P/N	Description	MOQ
LUI057-ANT1S	5.7 inches full color touch screen.	10