

APOGEE / DESIGO™ PX-HMI HMI-Touch 10.1” Panel LUI-Touch



Description

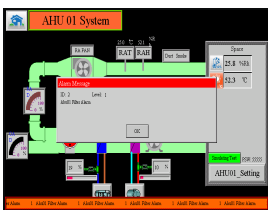
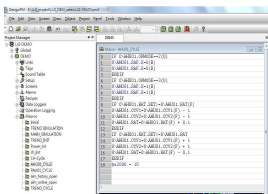
LUI-Touch touch panel is an HMI with high performance and programmable functions to answer the needs for most of the BMS BACnet IP and MS/TP automation stations and systems.

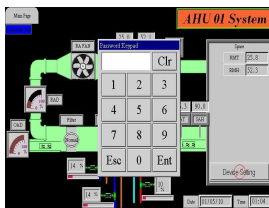
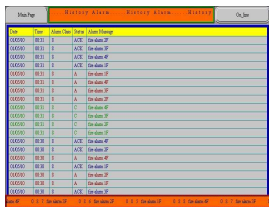
With 16:9 a wide and colorful high resolution screen, there is no compromise with its' response speed. The state-of-the-art industrial standard design makes LUI-Touch to easily handle harsh environments under long and steady operation time.



Features

- Supports SIEMENS APOGEE and DESIGO BACnet IP and MS/TP platform, also could be connection with BACnet LON via DESIGO PXG80-N BACnet Router.
- One million touch operated guaranteed.
- Multilingual supported, such as English, French, Germany, Italian, Espaniol, Traditional/Simplified Chinese, Japanese, Korean....etc
- Macro Programme:
 - Easy macro syntax genie supports you to design your control logic between HMI and communication device.
 - More function types of macro definition for startup, main, event, time, point on/off and page on/off to selection
- Alarm:
 - Provide alarm definition in LUI-Touch that include history alarms, on-line alarms and PopUp alarm massage.
 - Totally 8 level alarm colour defined.
 - Totally 16 zone alarm define and spearted for digital and analog alarm, analog alarm can be set of Hi/Hi-Hi and Low/Low-Low level indication.
 - Standard alarm list page for on-line and history.
- Security:
 - Total of 8 level password define to operating priority.

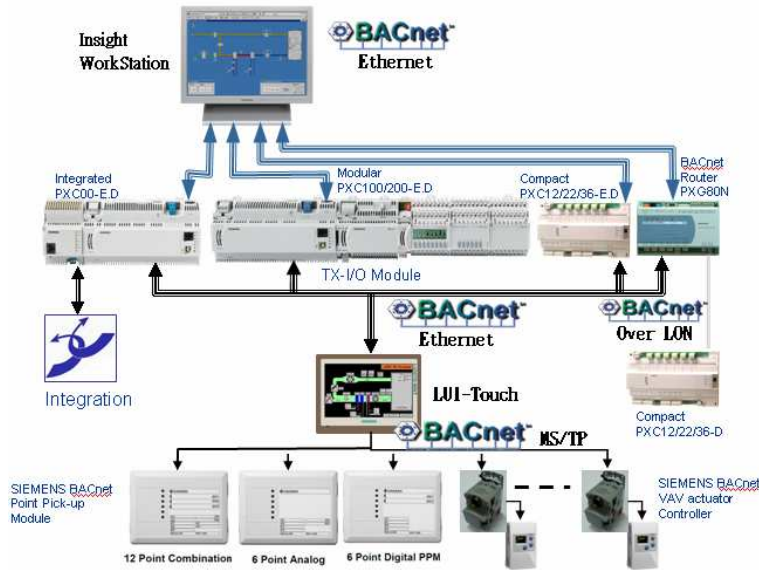




- The viewable, controllable of priority setup for each objects definition, such as button, info-block, graphic page, trend chart page...etc.
- Auto logoff, login setup and screensaver enable.

- 100% quality test and industrial standard coating cases let LUI-Touch look reliable and nice.
- Adopts 32 bits high function; high reliability and fan- less ARM CPU.
- Equipped with genuine 65,535 true colors, high brightness TFT modules.
- Provides RS232/422/485 communication ports available in standard models.
- The standard pre-set 32MB backup flash memory.
- Supports multi - languages, Windows build- in Fonts, BMP and JPG graphics and GIF animations.
- Provides transparent communication for designers to save their program adjustment time.
- The extension bus extends various customized devices, such as motion control, temperature control, communication module and I/O module...etc.
- High speed Ethernet and USB host port supports runtime database upload and download remote communication.
- Support MODBUS TCP / RTU / ASCII..communciation protocol.
- Schedule:
 - Include standardize schedule module.
 - Total of 48 Schedule objects including normal and specical day.
 - Support customer difined.
 - Support group Occ/Unocc via Macro programme.
- FTP Server supports, could be down/up load from remote PC station.
- Standard message indication. Show all of operatng recode on panel.

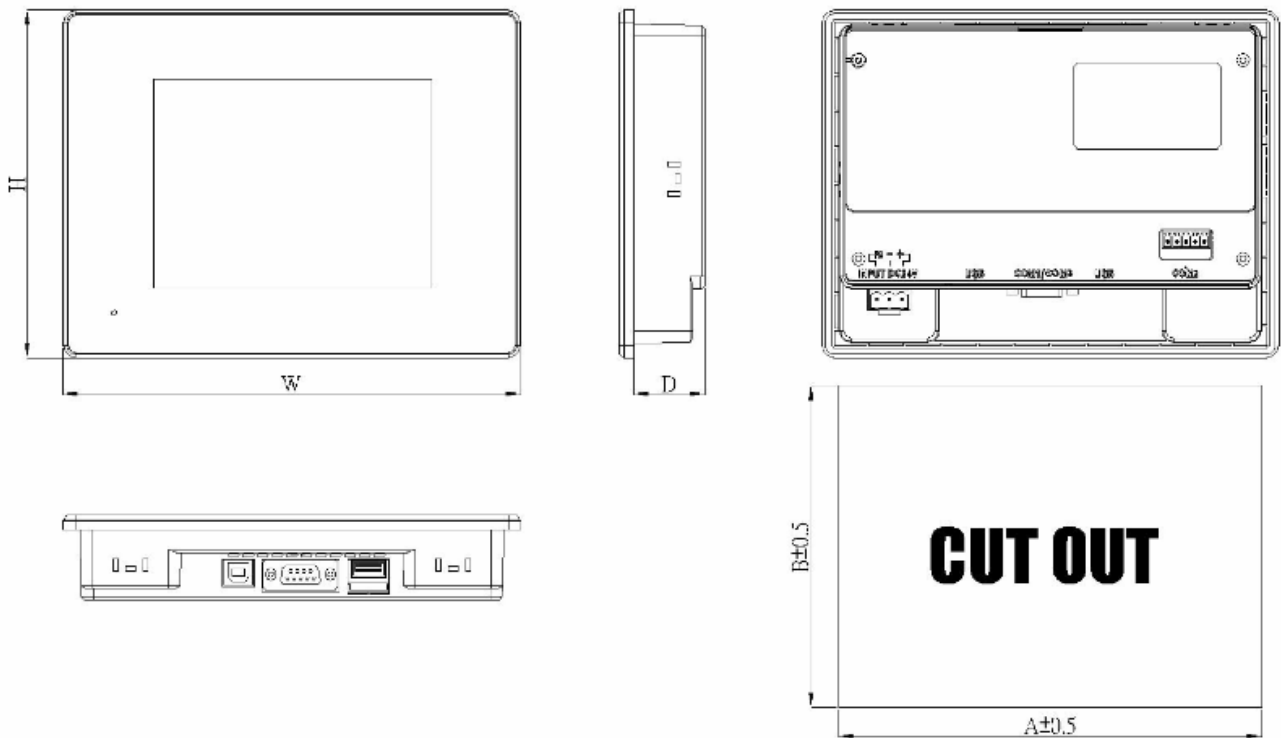
Applications:



Description for model 10.1” type:

- Via Ethernet port for connecting one to four BACnet /IP Automation Controller.
- Via serial port for connecting one to four BACnet MS/TP DDC device.
- Only support BACnet standard object AI, AO, AV, BI, BO, BV, MI, MO, MV object type.
- Support MODBUS TCP/RTU/ASCII protocol connection.
- Integrate to BMS system via DDC and MODBUS gateway or workstation directly such as DESIGO Insight or 3’rd SCADA HMI.
- Customize graphic design..

Dimensions:

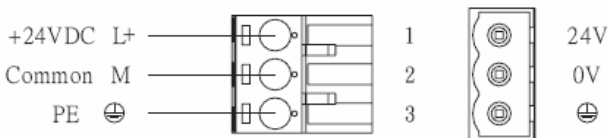


Model Number:	Outlet Dimensions:	Cutout Dimensions:
LUI100-WNT	(W)270.5 mm / (H)212.5mm / (D)40 mm	(A)259.5 mm / (B)201.5 mm

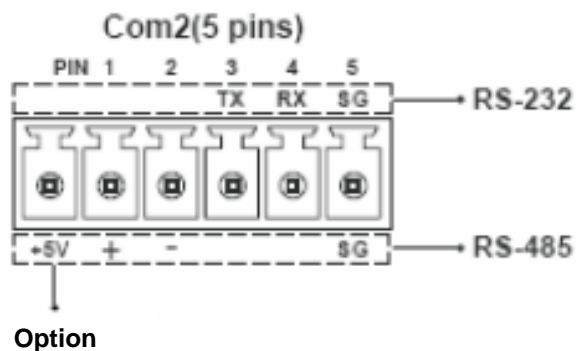
Connections / 腳位圖

Power Supply / 電源供應

Powered by a Low Voltage / Limited Energy power source.
以低電壓提供電力 / 限制能量電源。



COM1 (DB-9-Female)	
Pin	Description:
1	RD-422 TXD+ / RS-485 +
2	RS-232 RXD
3	RS-232 TXD
4	RS-422 RXD+
5	GEN
6	RS-422 TXD- / RS-485-
7	RS-232 TXD for COM3
8	RS-232 RXD for COM3
9	RS-422 RXD-



Technical Specification:

Display	Type	TFT LCD Module
	COLORs	65,536 colors
	BACKLIGHT TUBE	LED Backlight 20,000 Hrs (Note:1)
	Brightness (cd/m ²)	250
	RESOLUTION(Pixels)	1024 * 600
	SIZE(Inch)	10.1
	Touchscreen	Hardness/4H, 4-wire analog resistance
CPU	Nuvoton	ARM926EJ-S 32bits, 200MHz
O.S		HMI RTOS; LUI-Design
Application memory		8MB + 128MB NAND Flash
Battery backup memory		128KB(Standard)
Working memory		64MB SDRAM
Real Time clock		Yes
Interface	Series	COM1: RS232/422/485(DB9 Female)
		COM2: RS232/ RS485 (T.B.)
		COM3: RS232 (Com1: Pin5;7;8)
	Ethernet	10/100 Mb
	USB	USB full speed Host x 1 , USB full speed Client x 1
	Expansion	Micro SD Card.(Max 4G support)
Print Port		None.
Power	Input power	24V DC+-10%
	Consumption (W)	18
Operation Temp		0°~50 °C (32°~ 120°F)
Relative Humidity		10% ~ 90%RH
Vibration	10 to 55Hz (X, Y, Z axial, 1G Hz 30 Minutes vibration test)	
EMI	FCC Part 15 Class A	
CE	EN55022 · EN61000-4-2 · EN61000-4-3 · EN61000-4-8	
Protection class	NEMA4/IP65(front panel) standard	
Cooling	Free cooling	
Approvals	CE/FCC	
Schedule object.	Support schedule control	
Net Weight (kg)	1.25	
Note 1:The lamp lifetime is the typical value for continuous operation at 25 °C.		

Order Information:

P/N	Description	MOQ
LUI100-WNT	10.1 inches full color touch widescreen with Ethernet Port.	3