

APOGEE / DESIGO™ PX-HMI

HMI-Touch 15" Panel

LUI-Touch



Description

LUI-Touch touch panel is an HMI with high performance and programmable functions to answer the needs for most of the BMS BACnet IP and MS/TP automation stations and systems.

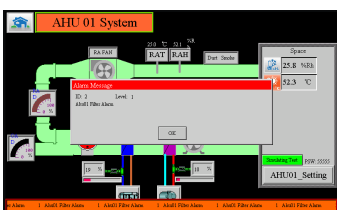
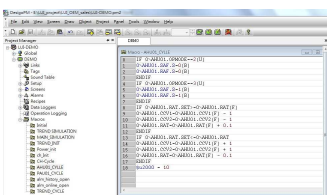
With colorful high resolution screen, there is no compromise with its' response speed. The state-of-the-art industrial standard design makes LUI-Touch to easily handle harsh environments under long and steady operation time.

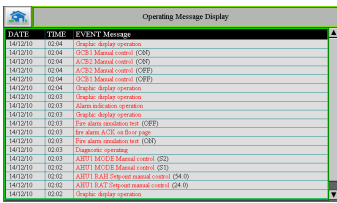
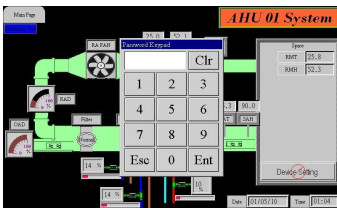
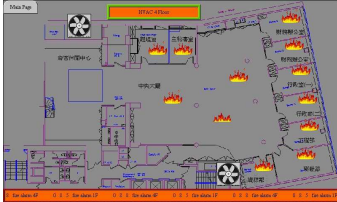
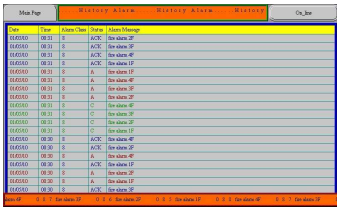
Aluminum frame to made of high quality vision and firm enough.



Features

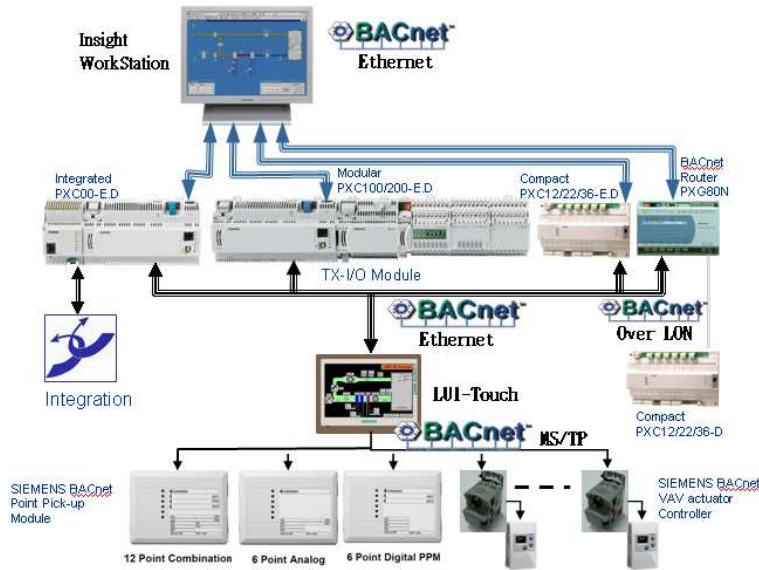
- Supports SIEMENS APOGEE and DESIGO BACnet IP and MS/TP platform, also could be connection with BACnet LON via DESIGO PXG80-N BACnet Router.
- One million touch operated guaranteed.
- Multilingual supported, such as English, French, Germany, Italian, Espaniol, Traditional/Simplified Chinese, Japanese, Korean....etc
- Macro Programme:
 - Easy macro syntax genie supports you to design your control logic between HMI and communication device.
 - More function types of macro definition for startup, main, event, time, point on/off and page on/off to selection
- Alarm:
 - Provide alarm definition in LUI-Touch that include history alarms, on-line alarms and PopUp alarm message.
 - Totally 8 level alarm color defined.
 - Totally 16 zone alarm define and spearted for digital and analog alarm, analog alarm can be set of Hi/Hi-Hi and Low/Low-Low level indication.
 - Standard alarm list page for on-line and history.





- Security:
 - Total of 8 level password define to operating priority.
 - The viewable, controllable of priority setup for each objects definition, such as button, info-block, graphic page, trend chart page...etc.
 - Auto logoff, login setup and screensaver enable.
- 100% quality test and industrial standard coating cases let LUI-Touch look reliable and nice.
- Adopts 32 bits high function; high reliability and fan- less ARM CPU.
- Equipped with genuine 65535 true colors, high brightness TFT modules.
- Provides RS232/422/485 communication ports available in standard models.
- The standard pre-set 4 to 128MB backup flash memory, which can expand up to 2GB Micro SD or USB Flash disk, allows user to store alarms, events and historical data.
- Supports multi - languages, Windows build- in Fonts, BMP and JPG graphics and GIF animations.
- Provides transparent communication for designers to save their program adjustment time.
- The extension bus extends various customized devices, such as motion control, temperature control, communication module and I/O module...etc.
- High speed Ethernet and USB host port supports runtime database upload and download remote communication.
- Support MODBUS TCP/RTU/ASCII..communcation protocol.
- Schedule:
 - Include standardize schedule module.
 - Total of 48 Schedule objects including normal and special day.
 - Support customer defined.
 - Support group Ucc/Unocc via Macro programme.
- FTP Server supports, could be down/up load from remote PC station.
- Standard message indication. Show all of operating recode on panel.

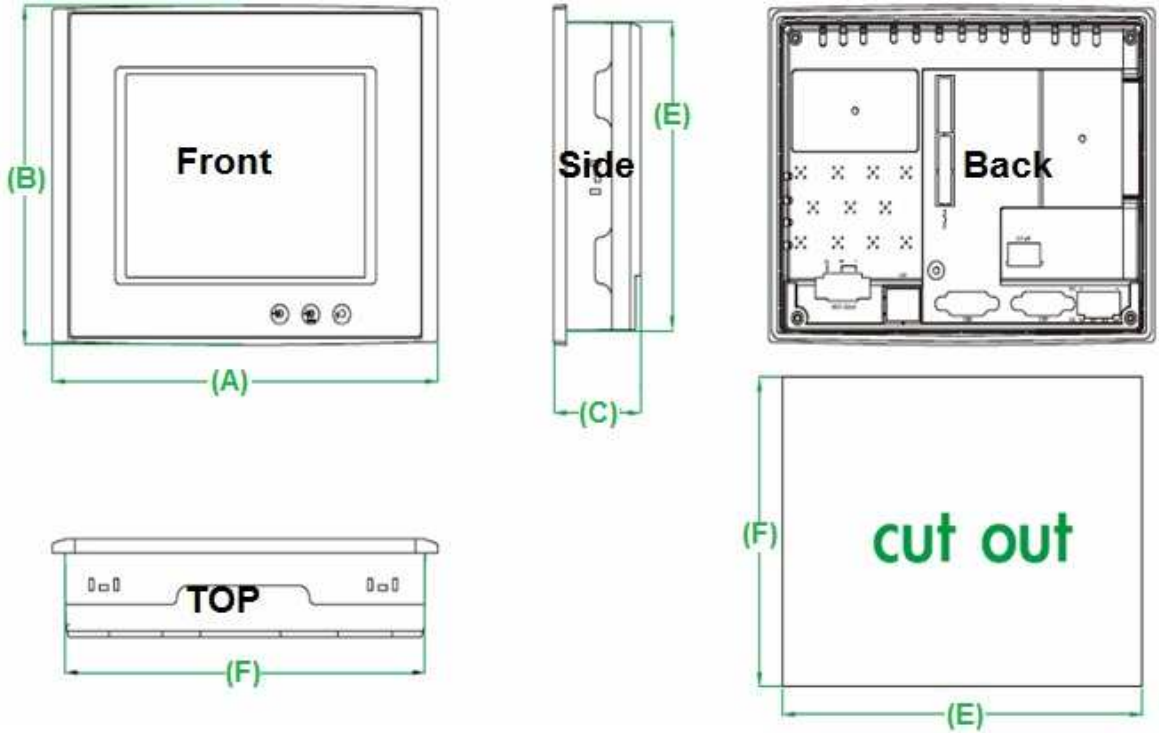
Applications:



Description for model 15" type:

- Via Ethernet port for connecting one to four BACnet /IP Automation Controller.
- Via serial port for connecting one to four BACnet MS/TP DDC device.
- Only support BACnet standard object AI, AO, AV, BI, BO, BV, MI, MO, MV object type.
- Support Modbus RTU and TCP protocol connection.
- Support SAAnet and P1MMI protocol.
- Customize graphic design..

Dimensions:

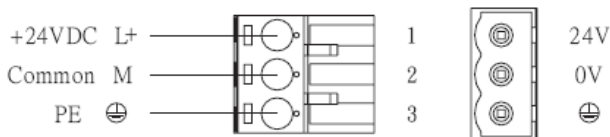


Model Number:	Outlet Dimensions:	Cutout Dimensions:
LUI151-XNT	(A)400 mm W / (B)298mm H / (C)57 mm T	(E)384.5 mm / (F)283 mm

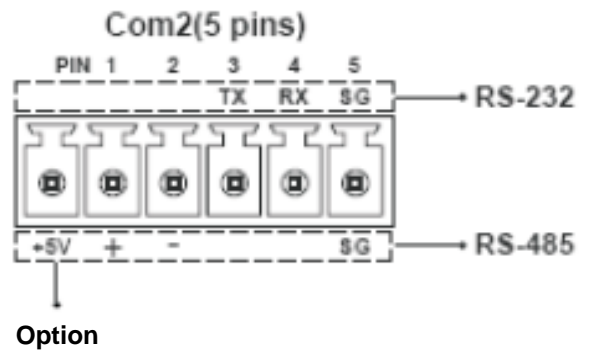
Connections / 腳位圖

Power Supply / 電源供應

Powered by a Low Voltage / Limited Energy power source.
以低電壓提供電力 / 限制能量電源。



COM1 (DB-9-Female)	
Pin	Description:
1	RD-422 TXD+ / RS-485 +
2	RS-232 RXD
3	RS-232 TXD
4	RS-422 RXD+
5	GEN
6	RS-422 TXD- / RS-485-
7	RS-232 TXD for COM3
8	RS-232 RXD for COM3
9	RS-422 RXD-



Technical Specification:

Display	Type	XVGA TFT LCD Module	●
	COLORs	65,536 colors	●
	BACKLIGHT TUBE	LED Backlight 50,000 Hrs CCFL Backlight	●
	Brightness (cd/m ²)		350
	RESOLUTION(Pixels)		1024*768
	SIZE(Inch)		15.0
	Touchscreen	Hardness/4H, 5-wire analog resistance	●
	CPU	Nuvoton	RISC 32bits, 200MHz
Cirrus			
NXP			
O.S		NEO RTOS	●
Application memory		8M + 128MB NAND Flash	●
Battery backup memory		128KB(Standard)	●
Working memory		64MB SDRAM	●
Interface	Series	COM1:RS232	●
		COM2:RS232/422/485	●
		COM3:RS232	
	Ethernet	10/100Mbps	●
	USB	2 port USB Host Ver2.0 FULL Speed	●
	Expansion	Micro SD card	●
Print Port	USB device port		●
Power	Input power	DC22V ~ DC26V	●
	Consumption (W)		25
Operation Temp		0°~50 °C (32°~ 120°F)	●
Relative Humidity		10% ~ 90%RH	●
Vibration	10 to 55Hz (X, Y, Z axial, 1G Hz 30 Minutes vibration test)		●
EMI		FCC Part 15 Class A	●
CE	EN55022 , EN61000-4-2 , EN61000-4-3 , EN61000-4-8		●
Protection class		NEMA4 / IP65(front panel) standard	●
Cooling		Free cooling	●
Approvals		CE/FCC	●
Schedule object.		Support schedule control	●
Net Weight (kg)			3.5

Order Information:

P/N	Description	MOQ
LUI150-XNT	15.0 inches XVGA full color touch screen with Ethernet Port.	4